

# MONTHLY MEMBERSHIP PROGRESS REPORT

LOCATION IDAHO

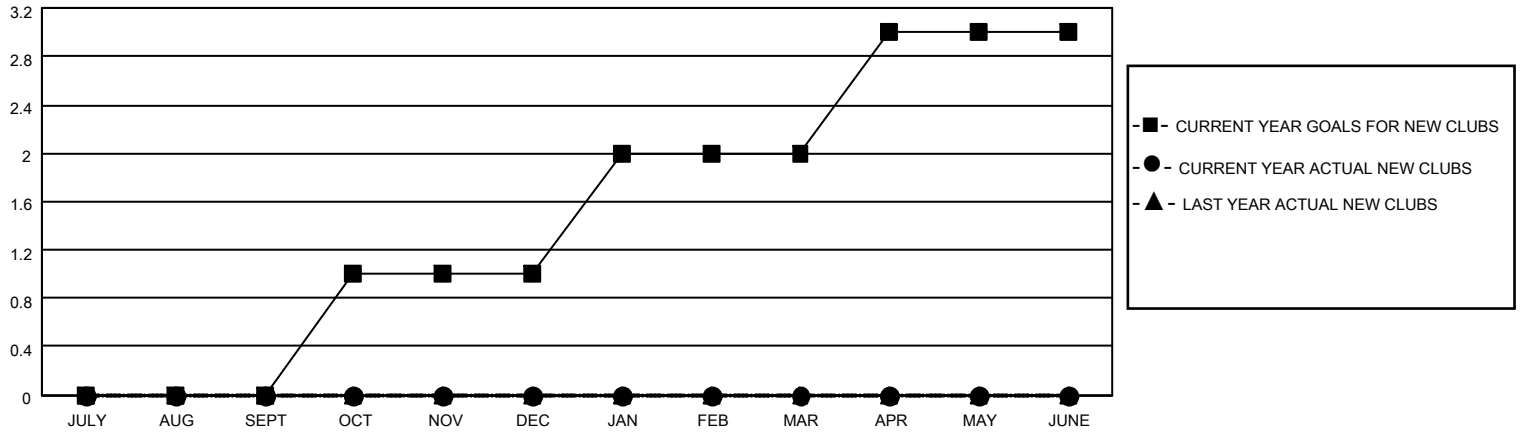
District 39 W

Results as of: 8/31/2021

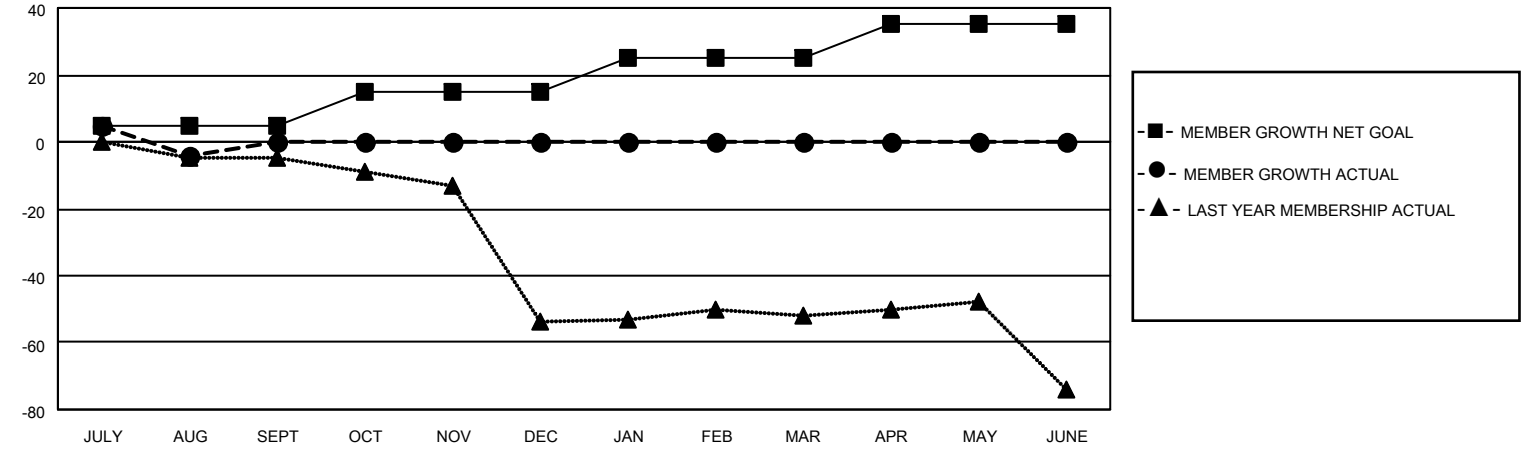
Clubs			
RESULTS FOR 2021-2022			
QUARTER	NEW CLUB GOAL	NEW CLUBS	DROPPED CLUBS
JULY/AUG/SEPT	0	0	1
OCT/NOV/DEC	1	0	0
JAN/FEB/MAR	1	0	0
APR/MAY/JUNE	1	0	0

Members			
RESULTS FOR 2021-2022			
QUARTER	MEMBER GROWTH NET GOAL	MEMBER GROWTH ACTUAL	DROPPED MEMBERS ACTUAL (including transfers)
JULY/AUG/SEPT	5	20	23
OCT/NOV/DEC	10	0	0
JAN/FEB/MAR	10	0	0
APR/MAY/JUNE	10	0	0

**GOALS AND ACTUAL NEW CLUBS CUMULATIVE**



**GOALS AND ACTUAL MEMBERS CUMULATIVE**



<b>DROPPED CLUBS: 1</b>	
<b>DROPPED MEMBERS</b>	
DECEASED	0
CLUB CANCELLED	0
OTHER	23
<b>TOTAL</b>	<b>23</b>

9 CLUBS OF 32 ADDED 1 OR MORE NEW MEMBERS
<a href="#">CLICK HERE FOR CUMULATIVE MEMBERSHIP DATA</a>

<u>GENDER DISTRIBUTION</u>	
MALE	510 (61.82%)
FEMALE	315 (38.18%)
NON BINARY	0 (0.00%)
PREFER NOT TO ANSWER	0 (0.00%)
<hr/>	
TOTAL FAMILY UNIT MEMBERS	198
<hr/>	
FAMILY MEMBERS PAYING HALF DUES	100